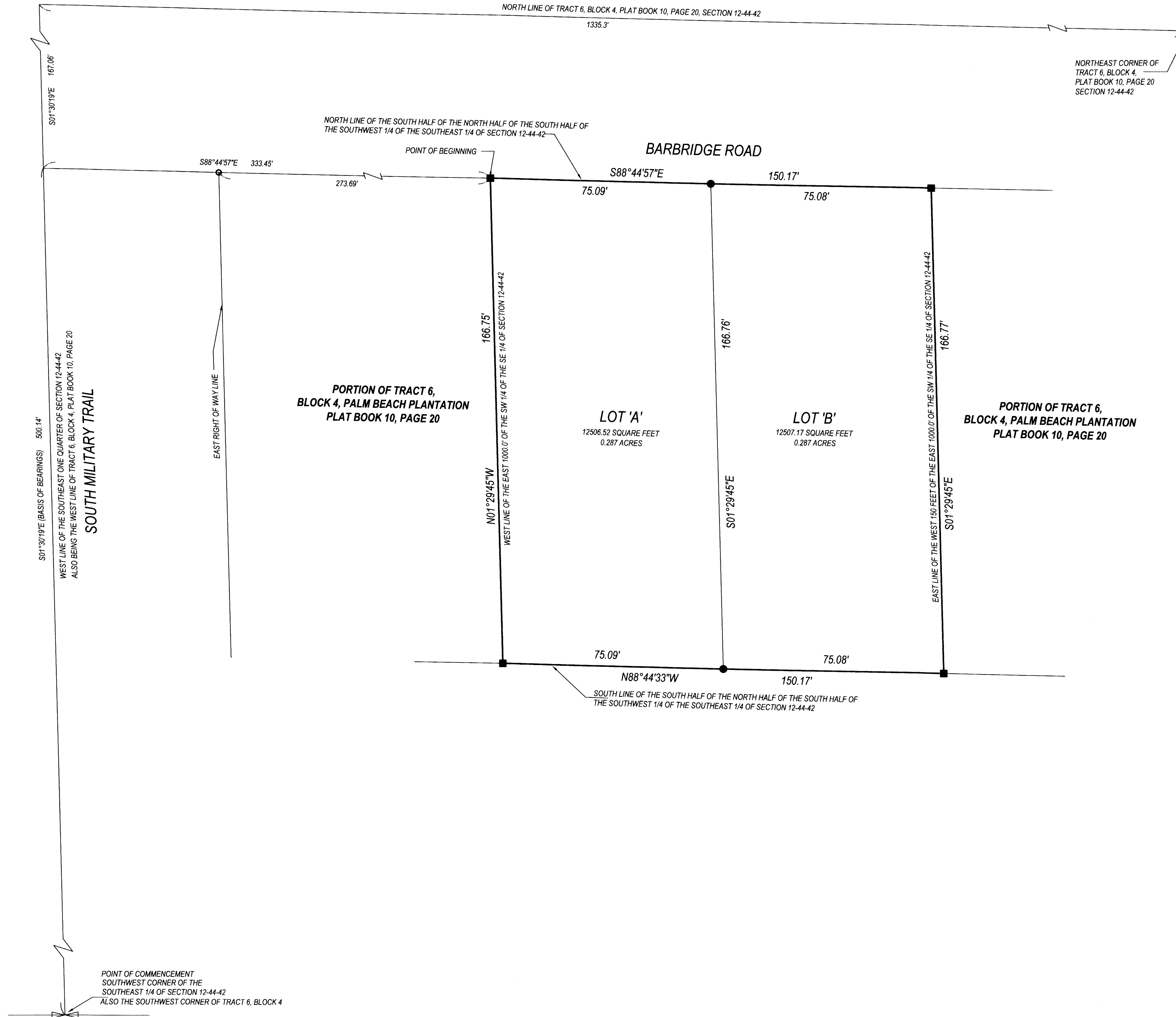
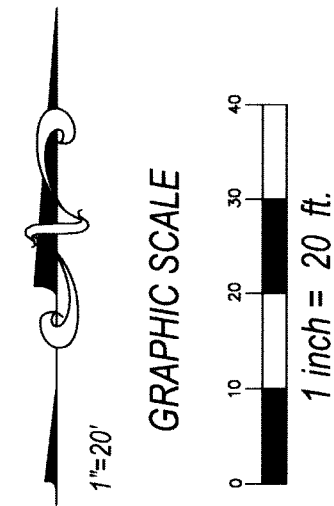


BARBRIDGE

BEING A PORTION OF THE SOUTHWEST ONE QUARTER OF THE
SOUTHEAST ONE QUARTER OF SECTION 12, TOWNSHIP 44 SOUTH, RANGE 42 EAST,
THE VILLAGE OF PALM SPRINGS, PALM BEACH COUNTY, FLORIDA

SHEET 2 OF 2

109



* ABBREVIATIONS:
PSM = PROFESSIONAL SURVEYOR & MAPPER
LB = LICENSED BUSINESS
PB = PLAT BOOK
ORB = OFFICIAL RECORD BOOK
PG = PAGE
SQ. FT. = SQUARE FEET
PRM = PERMANENT REFERENCE MONUMENT
LS = LICENSED SURVEYOR
ID = IDENTIFICATION

LEGEND

- SET 4"x 4" CONCRETE MONUMENT AND BRASS DISK "PRM LB 6788"
- SET IRON ROD AND CAP "LB 6788"
- FOUND NAIL AND DISK/ FOUND IRON ROD

**PRINCIPAL MERIDIAN
SURVEYING, Inc.**
LICENSED BUSINESS No. 8261
4546 CAMBRIDGE STREET
WEST PALM BEACH, FL 33415
OFFICE 561-478-7764
JOB # 19030243